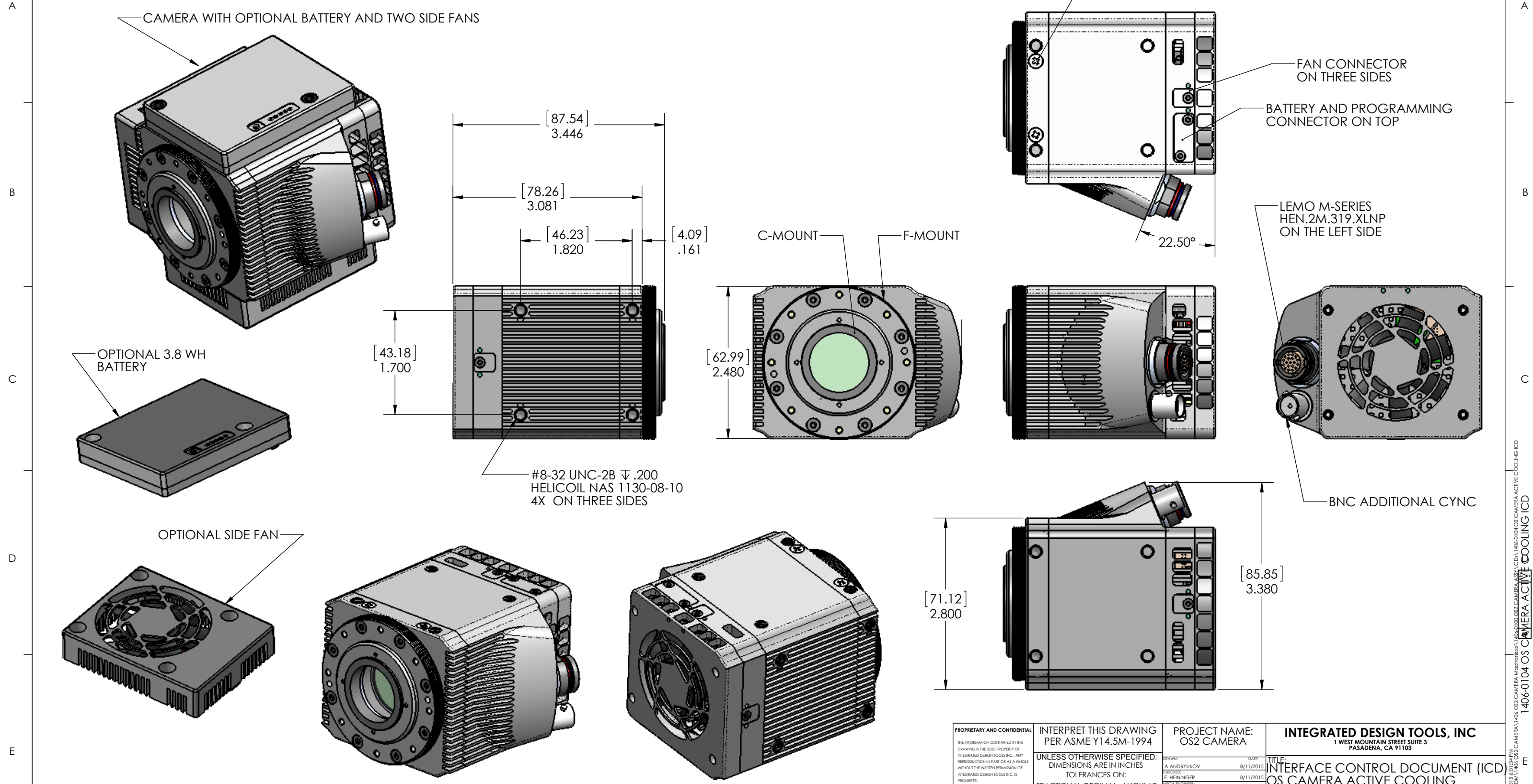


INTERFACE CONTROL DOCUMENT

1. MASS PROPERTIES: MASS = 1.52 POUNDS (estimated)
 CENTER OF MASS: (INCHES) X = 1.6 Y = 0.15 Z = 0.0 (estimated)

REVISIONS				
ZONE	REV.	DESCRIPTION	DATE	APPROVED
	J	INITIAL RELEASE	5/02/2015	

BODY PURGE PORT
 #4-40 UNC 100° FLAT PHIL W/O-RING
 MCMMASTER-CARR 98070A110



THIRD ANGLE PROJECTION		
⊕	+	
NEXT ASSY	USED ON	
APPLICATION		

PROPRIETARY AND CONFIDENTIAL <small>THE INFORMATION CONTAINED IN THIS DRAWING IS THE SOLE PROPERTY OF INTEGRATED DESIGN TOOLS, INC. ANY REPRODUCTION IN PART OR AS A WHOLE WITHOUT THE WRITTEN PERMISSION OF INTEGRATED DESIGN TOOLS, INC. IS PROHIBITED.</small>	INTERPRET THIS DRAWING PER ASME Y14.5M-1994 UNLESS OTHERWISE SPECIFIED: DIMENSIONS ARE IN INCHES TOLERANCES ON: FRACTIONAL DECIMAL ANGULAR ± 1/16 .X ± .1 ± 1° .XX ± .03 .XXX ± .010	PROJECT NAME: OS2 CAMERA	INTEGRATED DESIGN TOOLS, INC 1 WEST MOUNTAIN STREET SUITE 3 PASADENA, CA 91103
	DO NOT SCALE DRAWING	DRAWN: A. ANDRYUKOV 8/11/2015 CHECKED: E. HEININGER 8/11/2015 RECH. ENGINEER: A. ANDRYUKOV 8/11/2015 QUALITY ASSURANCE: OPERATION MANAGER: PROGRAM MANAGER: 12/09/2014	TITLE: INTERFACE CONTROL DOCUMENT (ICD) OS CAMERA ACTIVE COOLING

1406-0104 OS CAMERA ACTIVE COOLING ICD
 Tuesday, August 11, 2015 6:01:34 PM
 C:\Users\jandryukov\OneDrive\Documents\1406-0104 OS CAMERA\1406-0104 OS CAMERA ACTIVE COOLING ICD